

Argosy Plain Jane Dishcloth

By Vyvyan Neel

<http://inahappycamper.eponym.com/blog>



This version of the Argosy dishcloth omits those pesky cast-on/bind-off zigzag edges of the original. It is a great way to learn the grid sequencing and can be worked up as a practice piece before going on to the other designs in the *Argosy Recharged* series. There are only 8 rows that are repeated and they can be easily memorized. This is a smallish size when finished so to make a larger one, just cast on more stitches in multiples of 8. I think it would look great in a solid color also.

If you have any problems or find errors with the instructions please notify me and I'll try to get them worked out as soon as I can.
Email me at: vyvneel@sbglobal.net



Materials:

- Sugar n' Cream 100% cotton 2 oz. 1 skein color: O2316 Beach Ball Blue
- US #7 (4.5 mm) needles

*Gauge is not critical for this design

Finished size: 9 inches long by 10 inches wide (before washing)

Abbreviations:

K = Knit

P = Purl

SSK = slip, slip, knit these 2 sts together

K2tog = knit 2 sts together

P2tog = Purl 2 sts together

YO = yarn over

CO = cast on

St = stitch

RS = right side

WS = wrong side

PATTERN NOTES

Note 1: When casting on, always use the Knitted-On Cast On method. Note that this is different from the original Argosy pattern published on Knitty.com.

Note 2: Chart provided for additional reference.

Note 3: Odd-numbered rows are RS rows & even-numbered rows are WS rows.

WRITTEN DIRECTIONS:

CO 41 sts.

Rows 1, 2, 4, 6 & 8: [K1, p7] 5 times, k1.

Rows 3, 5 & 7: (RS) [K1, yo, k2tog, k3, ssk, yo] 5 times, k1.

Repeat Rows 1-8 six (6) more times.

Repeat Row 1.

[P2tog, slip stitch back to left needle], 40 times, P2tog.

Break yarn, draw through last st and pull tight.

Pattern & Images © 2007 Vyvyan Neel

All rights reserved. Pattern is for personal use only.

It is not to be sold or used to produce garments for resale. It may not be reprinted on the web or otherwise without permission.

<http://inahappycamper.eponym.com/blog>

Argosy Plain Jane Dishcloth Chart

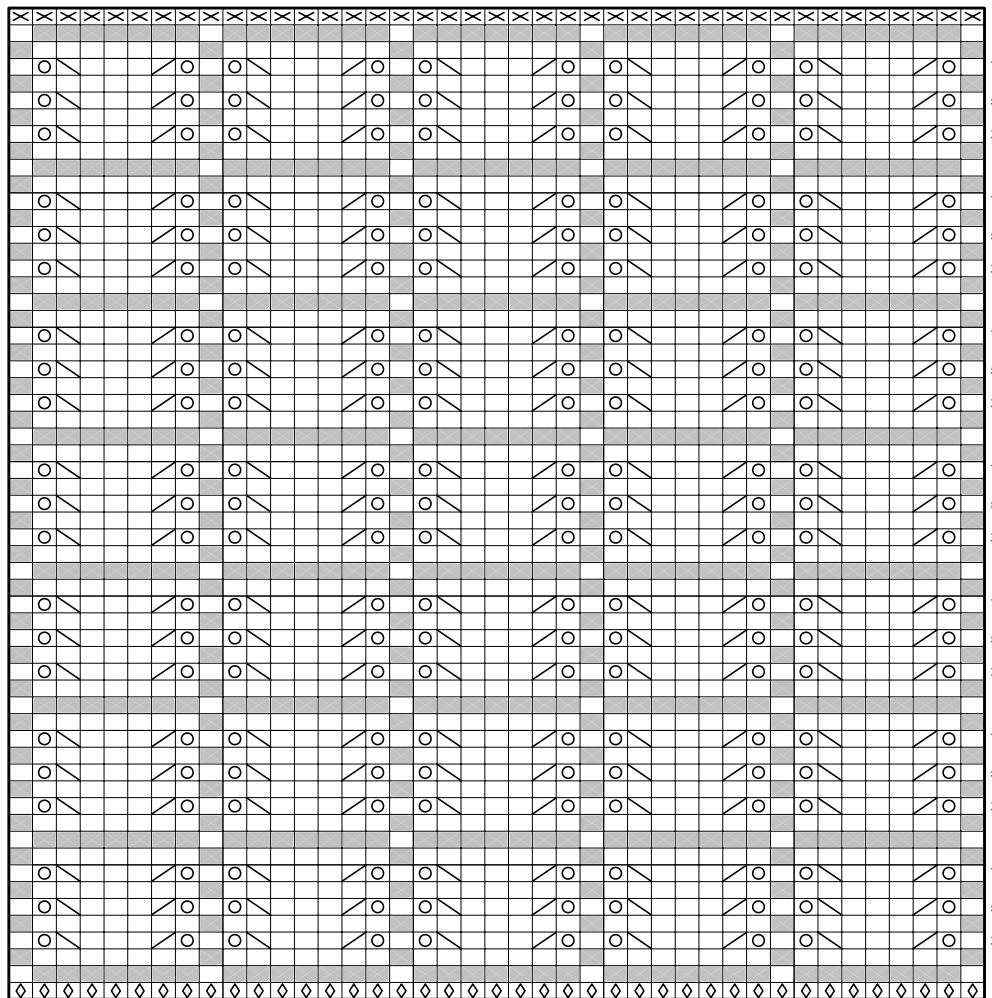
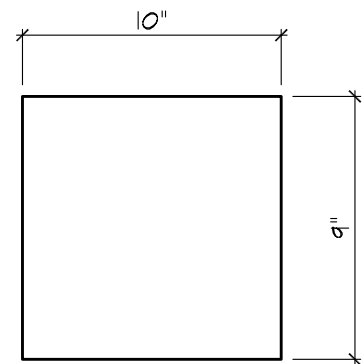


Chart Key					
	CO 1 st		K2tog		P on RS, K on WS
	Yarn Over		Ssk		K on RS, P on WS
	P2tog on WS; slip stitch back to left needle				



Schematic